

# AIPSRTN

## Retrofit Tenon Adaptor for 2<sup>3</sup>/<sub>8</sub>" Tenons

The PSRTN Retrofit Tenon Adaptor allows installation of fixtures with 3" fitters on existing 2<sup>3</sup>/<sub>8</sub>" pole tenons. Fits all Atlantic P2 Tenons and Post Top fixtures.

**Specifications:**

- Heavy duty one-piece die cast aluminum adaptor
- 4 Stainless Steel set screws at 90° secure adaptor to pole tenon
- Durable Black powdercoat finish over chromate conversion coating, custom colors are available
- Can be field installed or ordered factory-installed on our decorative post tops

**Features & Benefits:**

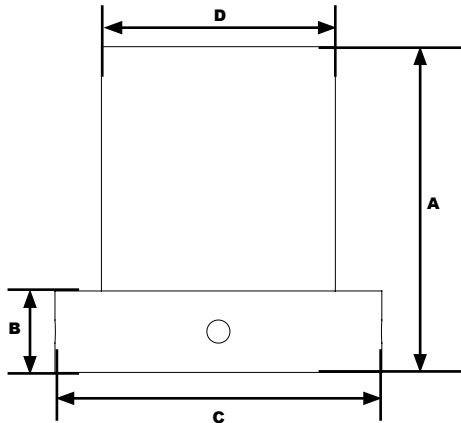
- Pole Tenon Adaptor converts a 2<sup>3</sup>/<sub>8</sub>" x 4" pole tenon to a 2<sup>7</sup>/<sub>8</sub>" x 3" tenon
- Saves time and installation costs. No need to purchase new tenons, and installation time is reduced since the existing tenon does not have to be removed.
- Order factory-installed on Atlantic decorative post tops for a no-hassle jobsite installation.



**See Page 2 for Installation and Detailed Dimensional Information**

**Dimensions**

<b>Height 1 (A)</b>	4" (102mm)
<b>Height 2 (B)</b>	1" (25mm)
<b>Width (C)</b>	4" (102mm)
<b>Diameter (D)</b>	2 <sup>3</sup> / <sub>8</sub> " (73mm)



**Order Information Example:**

AIPSRTNB

**Project Information:**

Project Name: _____	Fixture Type: _____
Complete Catalog #: _____	Date: _____
Comments: _____	

<b>AIPSRTN</b>	
<b>Model</b>	<b>Color</b>
AIPSRTN=Retrofit Tenon Adaptor for 2 <sup>3</sup> / <sub>8</sub> " Tenons	B=Black C=Custom (Consult Factory)

# AIPSRTN

## Retrofit Tenon Adaptor for 2<sup>3</sup>/<sub>8</sub>" Tenons

### Factory-Installed Option

By selecting the "P2A" catalog option when ordering Atlantic Post Top fixtures, the Retrofit Tenon Adaptor will be pre-installed on the fixture, ready to be installed on the existing P2 pole tenon on the jobsite.

### Pole Tenon Installation

Adaptor can be field-installed on existing 4" x 2<sup>3</sup>/<sub>8</sub>" (P2) tenons. Place adaptor on existing tenon and secure with the included set screws.



### Post Top Fixture Installation

Adaptor can be field-installed on fixtures with 3" fitters. Install adaptor into fixture and secure with fixture's mounting hardware. Place assembly over existing 4" x 2<sup>3</sup>/<sub>8</sub>" (P2) tenon and secure to the tenon with the included set screws.

