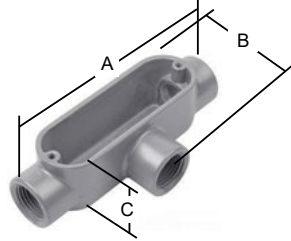


Malleable Iron Die Cast - Threaded - "T" Type



Industry Standards

- UL 514A
- Federal Spec W-c 586D
- NEMA – FB-1

Construction

- Body – Malleable Iron
- Finish – Zinc Plating with Aluminum Enamel Paint

Application

- To provide access for electrical conductors when pulling, splicing and/or maintenance

Features

- Tapered Threaded Hubs-NPT
- Suitable for concrete and wet locations

catalog number	size in inches	box qty.	weight lbs. per unit	weight lbs. per box	dimensions (in.)		
					A	B	C
AI MT 050	½"	10	1.1	11	4 ¹ / ₁₆ "	2 ¹ / ₁₆ "	1 ³ / ₈ "
AI MT 075	¾"	10	1.4	14	5 ³ / ₈ "	2 ¹ / ₄ "	1 ¹ / ₁₆ "
AI MT 100	1"	5	2	10	6 ³ / ₁₆ "	2 ⁵ / ₈ "	1 ⁷ / ₈ "
AI MT 125	1¼"	2	3.3	6.6	8 ¹ / ₈ "	2 ³ / ₄ "	2 ³ / ₄ "
AI MT 150	1½"	2	3.7	7.4	8 ¹ / ₈ "	2 ¹³ / ₁₆ "	2 ¹³ / ₁₆ "
AI MT 200	2"	1	6.6	6.6	10 ¹ / ₂ "	4 ⁷ / ₁₆ "	3 ⁵ / ₁₆ "
AI MT 250	2½"	1	12.7	12.7	13 ⁵ / ₈ "	5 ³ / ₈ "	3 ³ / ₈ "
AI MT 300	3"	1	15.5	15.5	13 ³ / ₈ "	5 ⁷ / ₈ "	4 ³ / ₄ "
AI MT 350	3½"	1	25.4	25.4	16 ¹ / ₄ "	6 ⁷ / ₈ "	5 ⁵ / ₈ "
AI MT 400	4"	1	25.4	25.4	16 ⁵ / ₈ "	7 ³ / ₁₆ "	5 ⁵ / ₈ "

Malleable Conduit Body Covers and Gaskets

Industry Standards

- UL 514A
- Federal Spec W-c 586D
- NEMA – FB-1

Construction

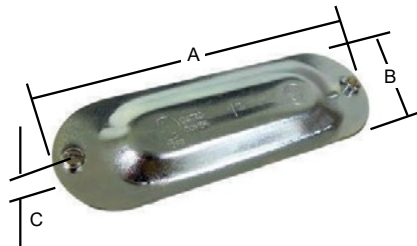
- Stamped Steel Cover
- Neoprene Gasket
- Steel Screws

Application

- To cover the Conduit body opening

Features

- Captive Steel screws



COVERS	catalog number	size in inches	box qty.	weight lbs. per unit	weight lbs. per box	dimensions (in.)		
						A	B	C
	AI C-1	½"	25	0.09	2.25	3 ⁷ / ₈ "	1 ⁵ / ₁₆ "	¼"
	AI C-2	¾"	25	0.12	3	4 ⁵ / ₈ "	1½"	5 ¹ / ₁₆ "
	AI C-3	1"	25	0.16	4	5 ⁵ / ₁₆ "	1¾"	5 ¹ / ₁₆ "
	AI C-4	1¼" - 1½"	25	0.31	7.8	7 ³ / ₁₆ "	2½"	¾"
	AI C-5	2"	25	0.51	12.8	9½"	3 ³ / ₁₆ "	½"
	AI C-6	2½" - 3"	25	0.91	22.8	12¼"	4 ⁵ / ₁₆ "	¾"
	AI C-7	3½" - 4"	25	1.4	35	14 ⁷ / ₈ "	5 ⁵ / ₈ "	¾"

GASKETS	catalog number	size in inches	box qty.	weight lbs. per box
AI NG-2	¾"	25	2	
AI NG-3	1"	25	2.5	
AI NG-4	1¼" - 1½"	25	4.7	
AI NG-5	2"	25	7.7	
AI NG-6	2½" - 3"	25	15.8	
AI NG-7	3½" - 4"	25	24.4	