

## PARKING GARAGE SOLUTIONS

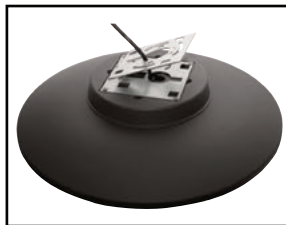


## AIAFRC30 Ordering Guide

**LED**icated

<b>MODEL</b>	AIAFRC30Q LED Allora II Round Garage Lighter
<b>OPTICS</b>	<ul style="list-style-type: none"> <li>•Rectangular Wide (L)</li> <li>•Type V (F)</li> </ul>
<b>WATTAGES</b>	<ul style="list-style-type: none"> <li>•1x37w</li> <li>•1x65w</li> <li>•1x100w (Type V only)</li> </ul>
<b>DRIVER</b>	<ul style="list-style-type: none"> <li>•120-277v (U)</li> <li>•347-480v (H)</li> </ul>
<b>CCT</b>	<ul style="list-style-type: none"> <li>•4000K (4K)</li> <li>•5000K (5K)</li> </ul>
<b>COLOR</b>	<ul style="list-style-type: none"> <li>•Bronze (Z)</li> <li>•White (W)</li> <li>•Custom Color (Consult Factory)</li> </ul>
<b>MOUNTING</b>	<ul style="list-style-type: none"> <li>•Easy-Hang Bracket (NM)</li> <li>•Trunnion (T)</li> <li>•Pendant Mount (PA)</li> </ul>
<b>OPTIONS</b>	See Specification Page for Options.

### MOUNTING OPTIONS



**Easy Hang Mount**



**Trunnion**



**Pendant**

### Fixture:

Die Cast and Sand Cast Aluminum Housing, Integral Heat Sinking. Includes 3' Cord.

### Wattage:

37w Array: 37w, System: 41w; (70-150w HID Equivalent)  
65w Array: 65.3w, System: 72w; (150-250w HID Equivalent)  
100w Array: 100w, System: 111w; (150-250w HID Equivalent)

### Listing & Ratings:

CSA: Listed for Wet Locations, ANSI/UL 1598, 8750; IP65 (IP66 with Pendant and Trunnion Mounts Only)

### Controls & Options:

Motion Sensors, Surge Protection, Fuses, Battery Backup

**L70**  
25°C **327,000 Hours**



NM Mount T & PA Mounts

**ATLANTIC Solutions**  
By Atlantic Industrial

## PARKING GARAGE SOLUTIONS

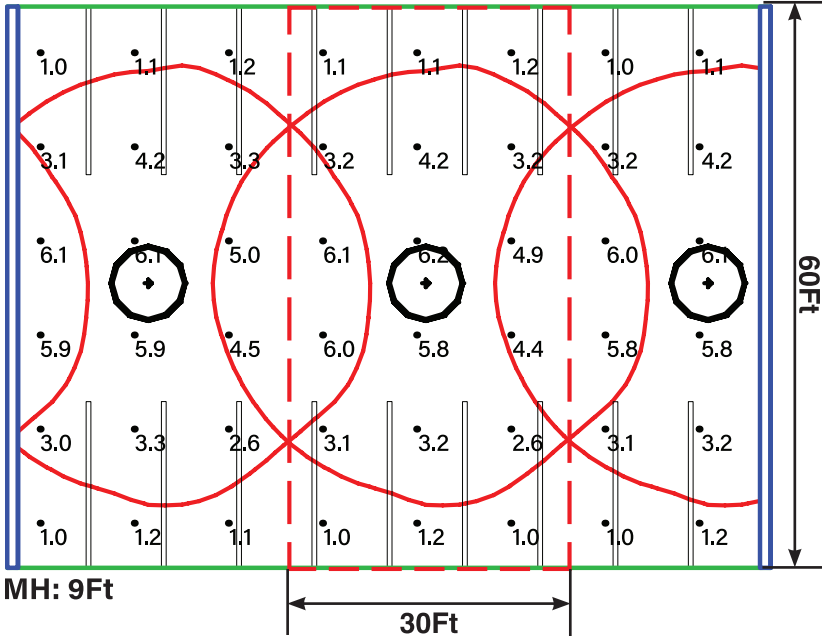
Highly Uniform Performance Optics

### TYPICAL GARAGE LAYOUT

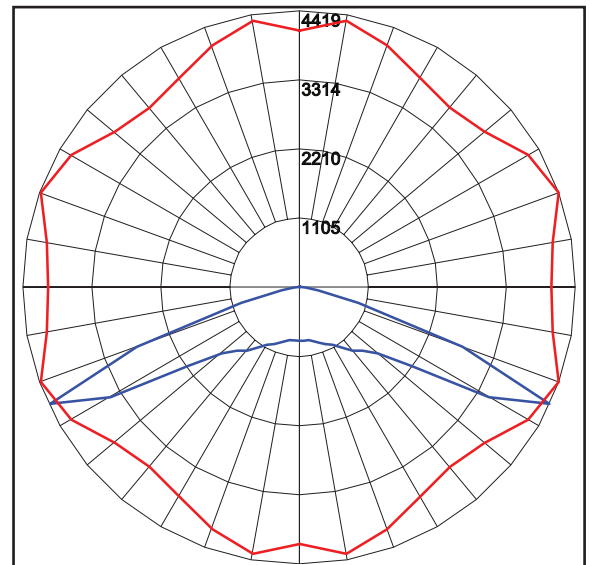
30ft X 60ft Bay; 9ft Mounting Height



PLAN VIEW

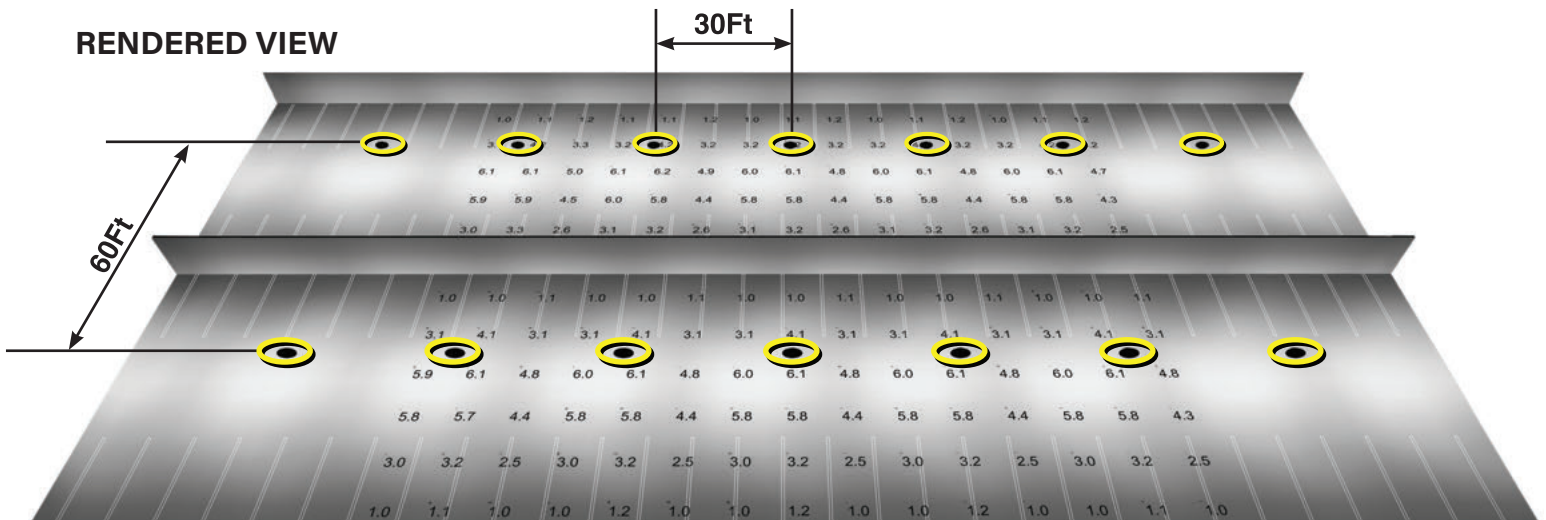


POLAR GRAPH



- Controlled full cutoff optics designed specifically for Parking Garages spread light uniformly
- Peak Candlepower is at 25 degrees to driving lane to lower glare

RENDERED VIEW



**AIAFRC30QL1X37 3.0 FTC AVG, 6.2 FTC MAX, 1.0 FTC MIN, 3.2:1 AVG/MIN, 6.2:1 MAX/MIN**

Exceeds IES RP-20-98 of 1.0 FTC MIN and MAX/MIN of 10:1